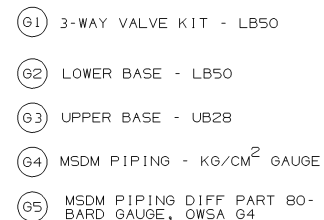
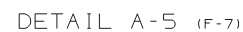


REVISE ON CAD ONLY
UG PART: GR0791-0918
(SPEC: 119E4884)

- CTQ




6	INSTR, CLN & PNT	ML ITEM 0108
5	INSTR, ASSY-TUBE & FTG	21544435
4	WELDING-GENL SPEC	P8A-AG1
3	WLD FAB OF GTRB PP	P8A-AG3
2	APLD PRAC, PP	351A3700
1	APLD PRAC, GENL MACH	348A9200
IT.	NOMENCLATURE	IDENT

LIST OF COMPLEMENTARY DOCUMENTS

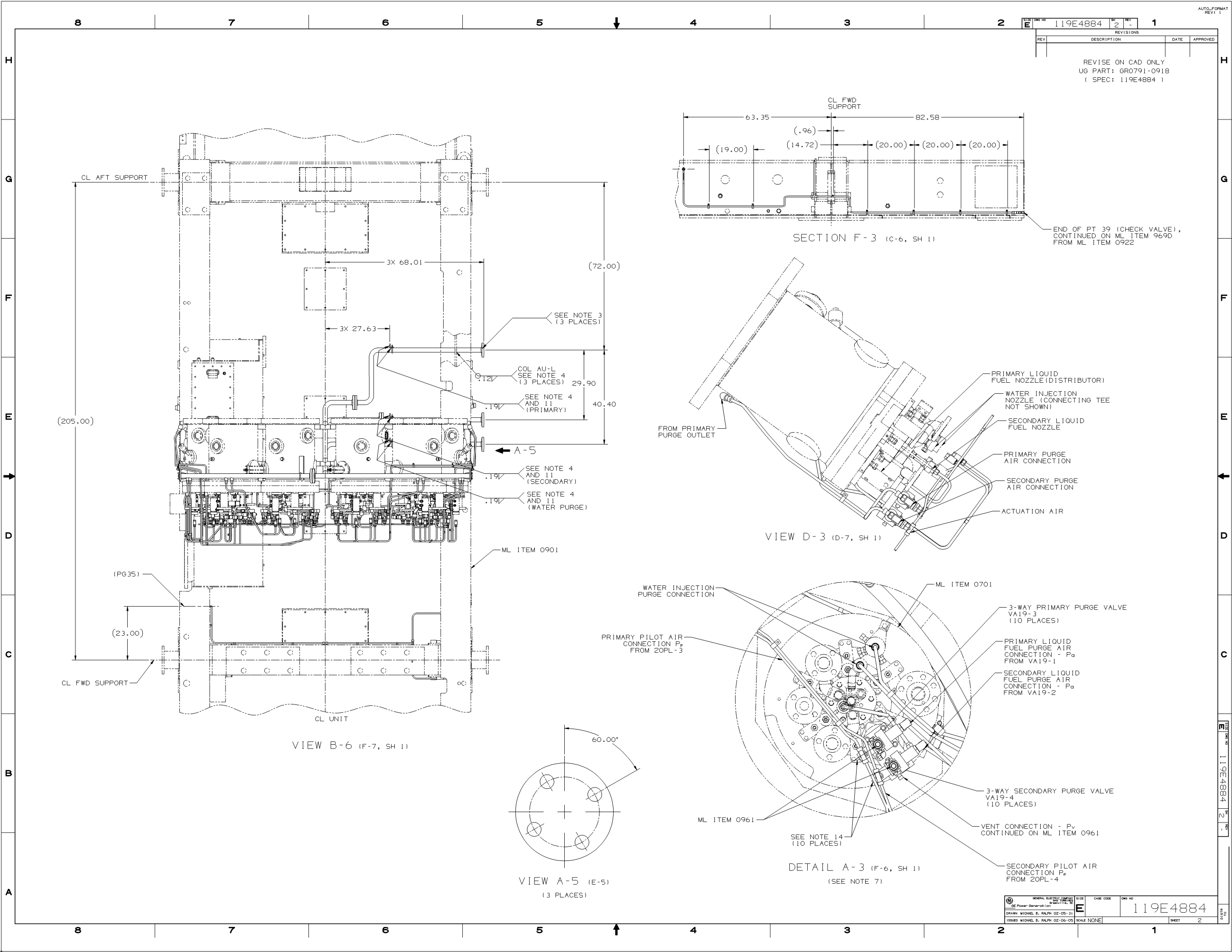
—	—	—	—	A	—	A	REV	REV STATUS OF SHEET
7	6	5	4	3	2	1	SH	

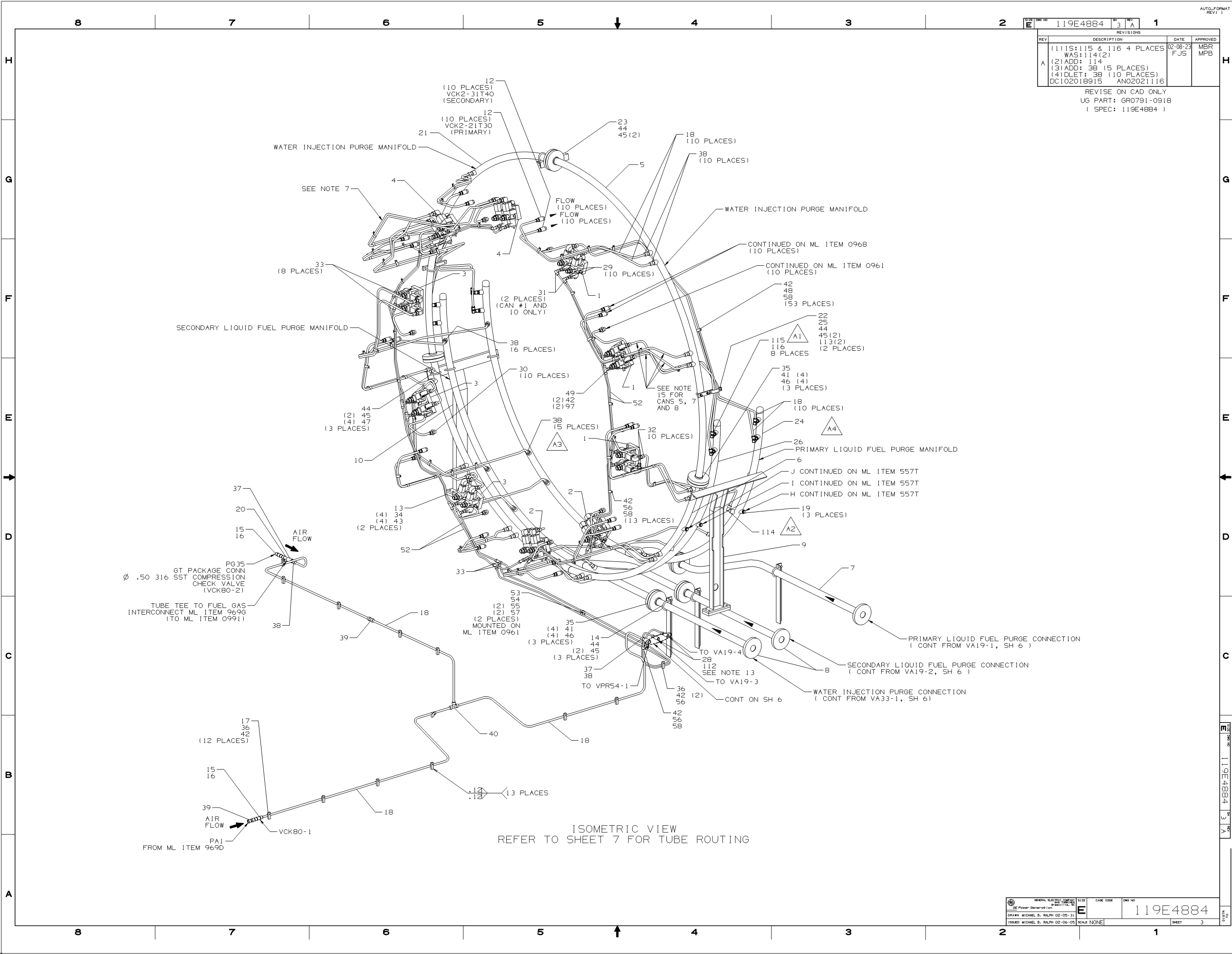
BOM ISSUED

UNLESS OTHERWISE SPECIFIED DIMENSIONS ARE IN INCHES TOLERANCES ARE - 2 PL. DECIMALS ± .01 3 PL. DECIMALS ± .005 ANGLES ± .1 FRACTIONS ± .005	SIGNATURES		DATE	 GE Power Generation GENERAL ELECTRIC COMPANY Greenville, SC
	DREW/MICHAEL B. RALPH 02-06-03 DEBEDIJN TRAYLOR 02-06-03 ERIN MICHAEL P. BLACK 02-06-03 LORIAN MICHAEL B. RALPH 02-06-03 MICHAEL J. TRAYLOR 02-06-03		02-06-03 02-06-03 02-06-03 02-06-03 02-06-03	
APPLIED PRACTICES 348A200	SIM TO: 119E3725			SCALE: NONE DES NO: 119E4884
			DRAWING NO: 119E4884	SHEET 1

03	
03	PIPING ARR
05	FUEL NOZZLE PURGE
04	FIRST MADE FOR ML-7A1PEA246-1T4 091

SIZE	CAGE CODE	DWG NO
E		119F4884





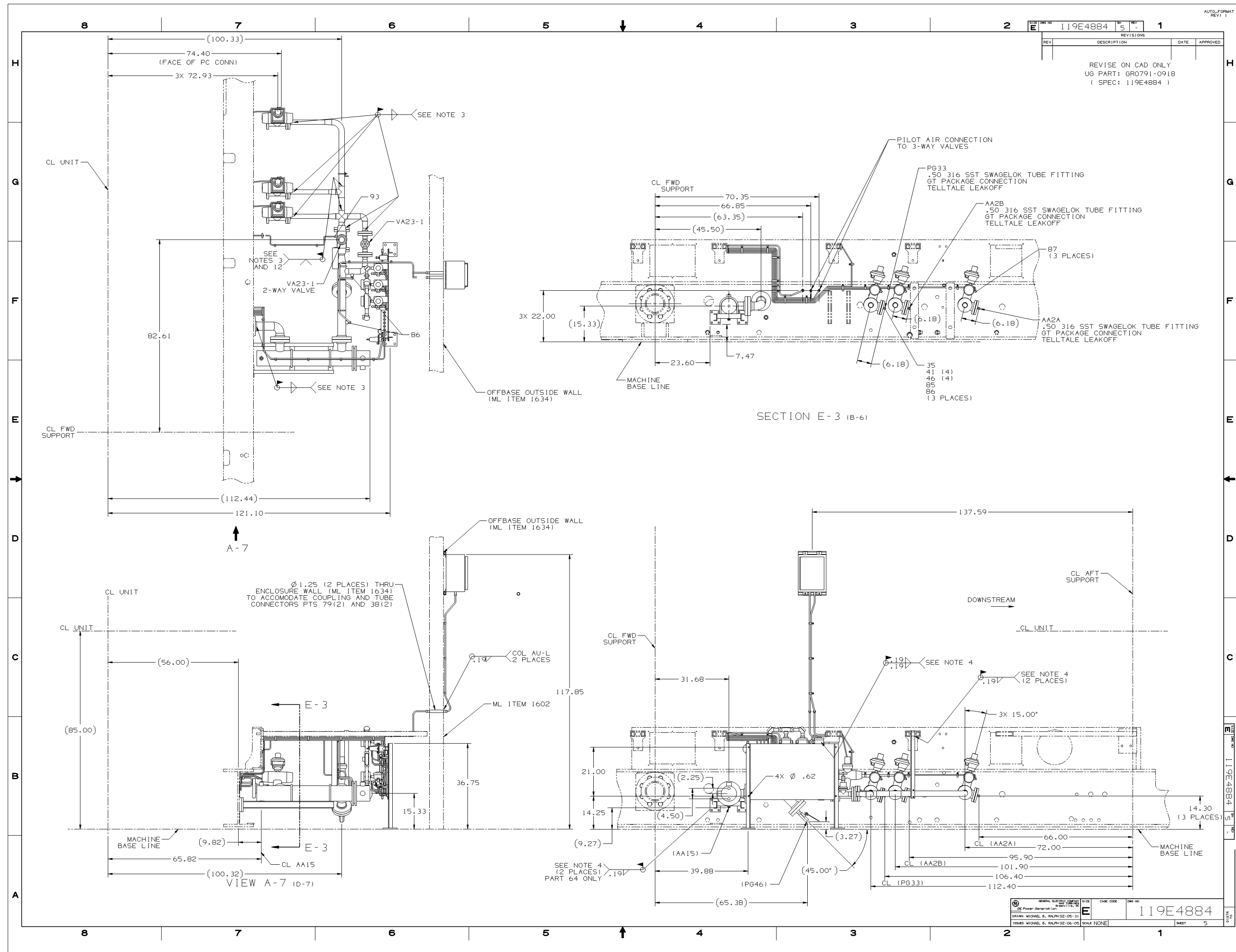
E		119E4884	3	A	1
REVISIONS					
REV	DESCRIPTION	DATE	APPROVED		
A	(1) IS: 115 & 116 4 PLACES (2) WAS: 114 (2) (3) ADD: 114 (4) DLET: 38 (10 PLACES) DC102018915 ANO2021116	02-08-23 FJS	MBR MPB		

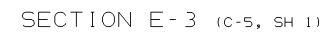
REVISE ON CAD ONLY
UG PART: GR0791-0918
(SPEC: 119E4884)


E		119E4884	3	A	1
REVISIONS					
REV	DESCRIPTION	DATE	APPROVED		
A	(1) IS: 115 & 116 4 PLACES (2) WAS: 114 (2) (3) ADD: 114 (4) DLET: 38 (10 PLACES) DC102018915 ANO2021116	02-08-23 FJS	MBR MPB		

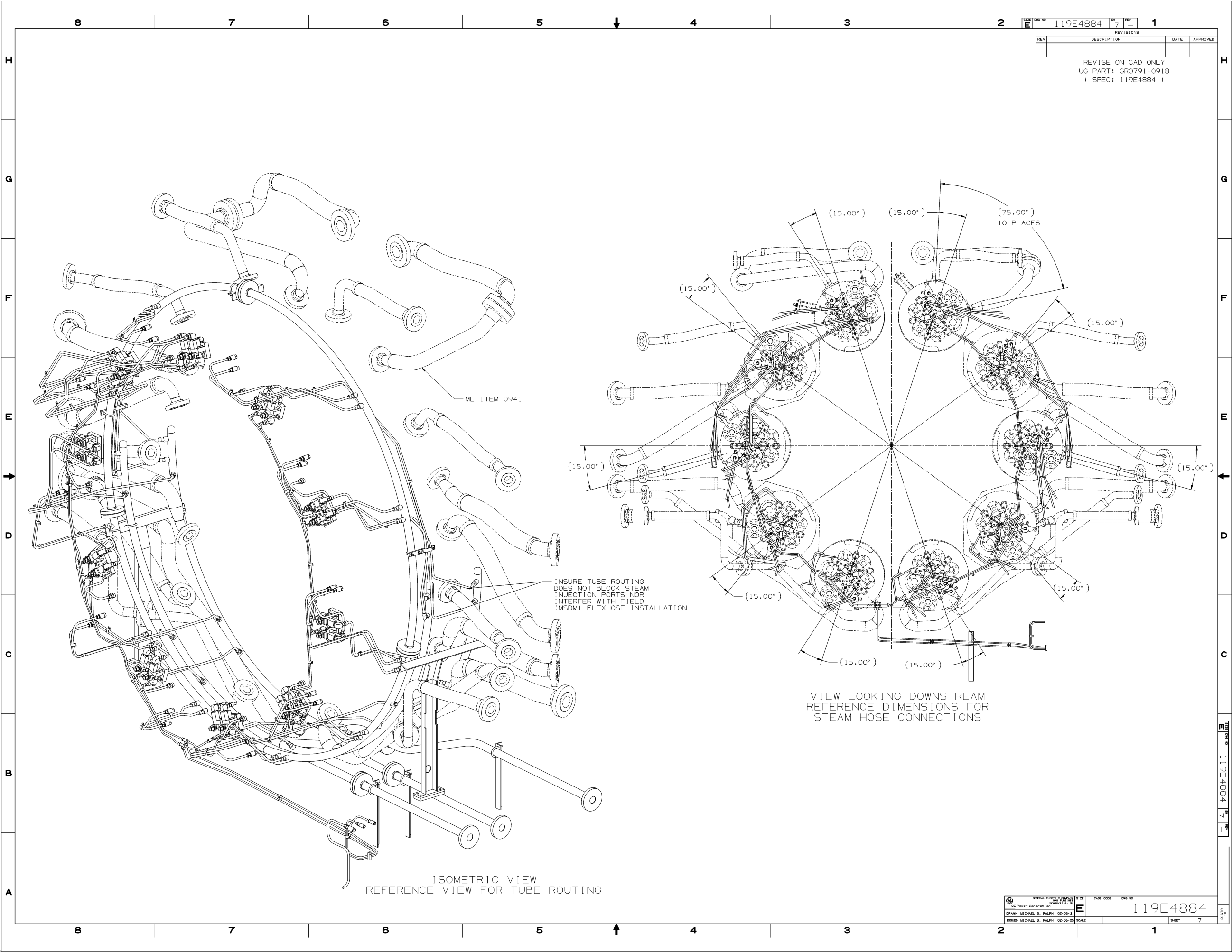
REVISE ON CAD ONLY
UG PART: GR0791-0918
(SPEC: 119E4884)







 GENERAL ELECTRIC COMPANY 1000 TWENTY-THIRD STREET GE Power Generation Greenville, SC 29615	SIZE	CAGE CODE	DWG NO
	E	119E4884	
DRAWN MICHAEL B. RALPH 02-05-31		ISSUED MICHAEL B. RALPH 02-06-05	SCALE NONE



SIZE	DWS NO	119E4884	SH	7	REV	—	1
E							
REVISIONS							
REV	DESCRIPTION					DATE	APPROVED

REVISE ON CAD ONLY
UG PART: GR0791-0918
(SPEC: 119E4884)

GENERAL ELECTRICAL COMPANY		SIZE	CAGE CODE	DWS NO	119E4884
SEE Power Generation for		119E4884			
DRAWN MICHAEL B. RALPH		02-05-31			
ISSUED MICHAEL B. RALPH		02-06-05	SCALE	SHEET	7